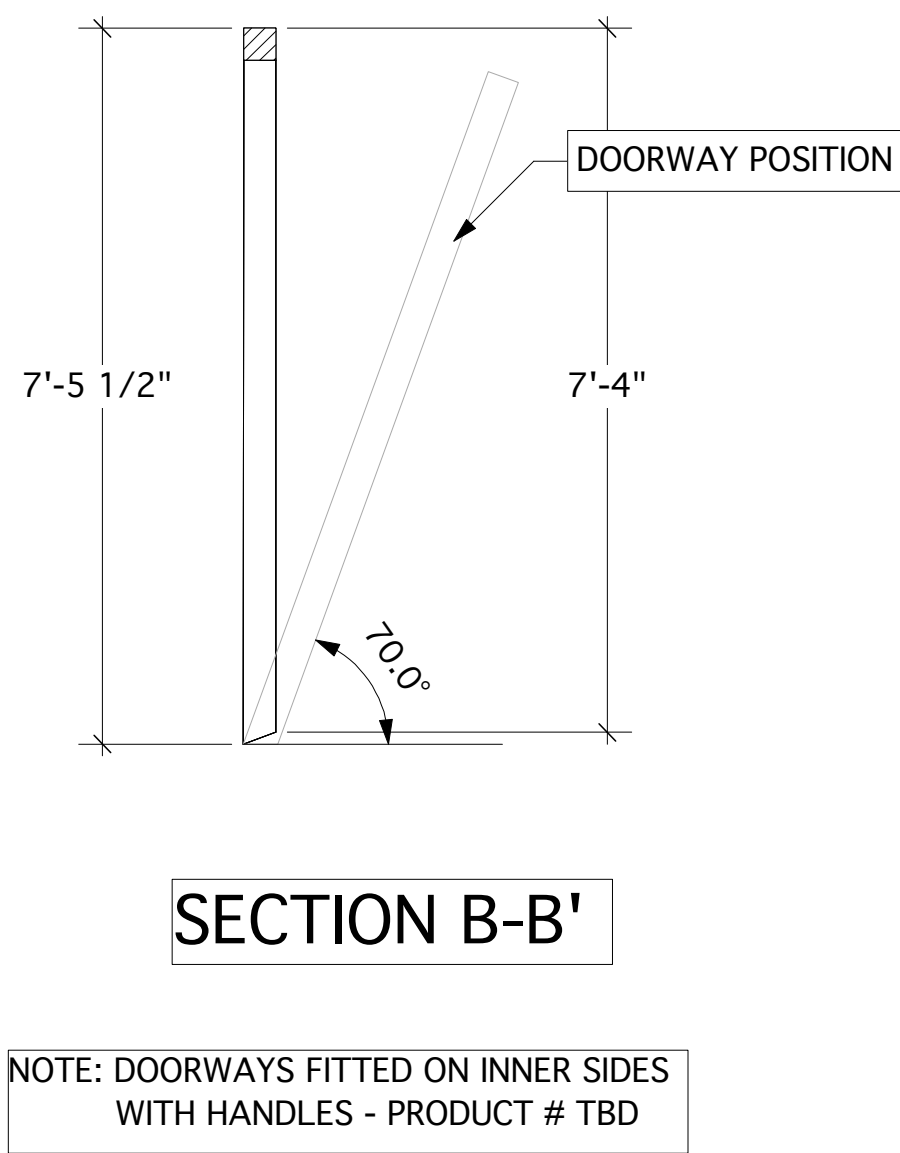
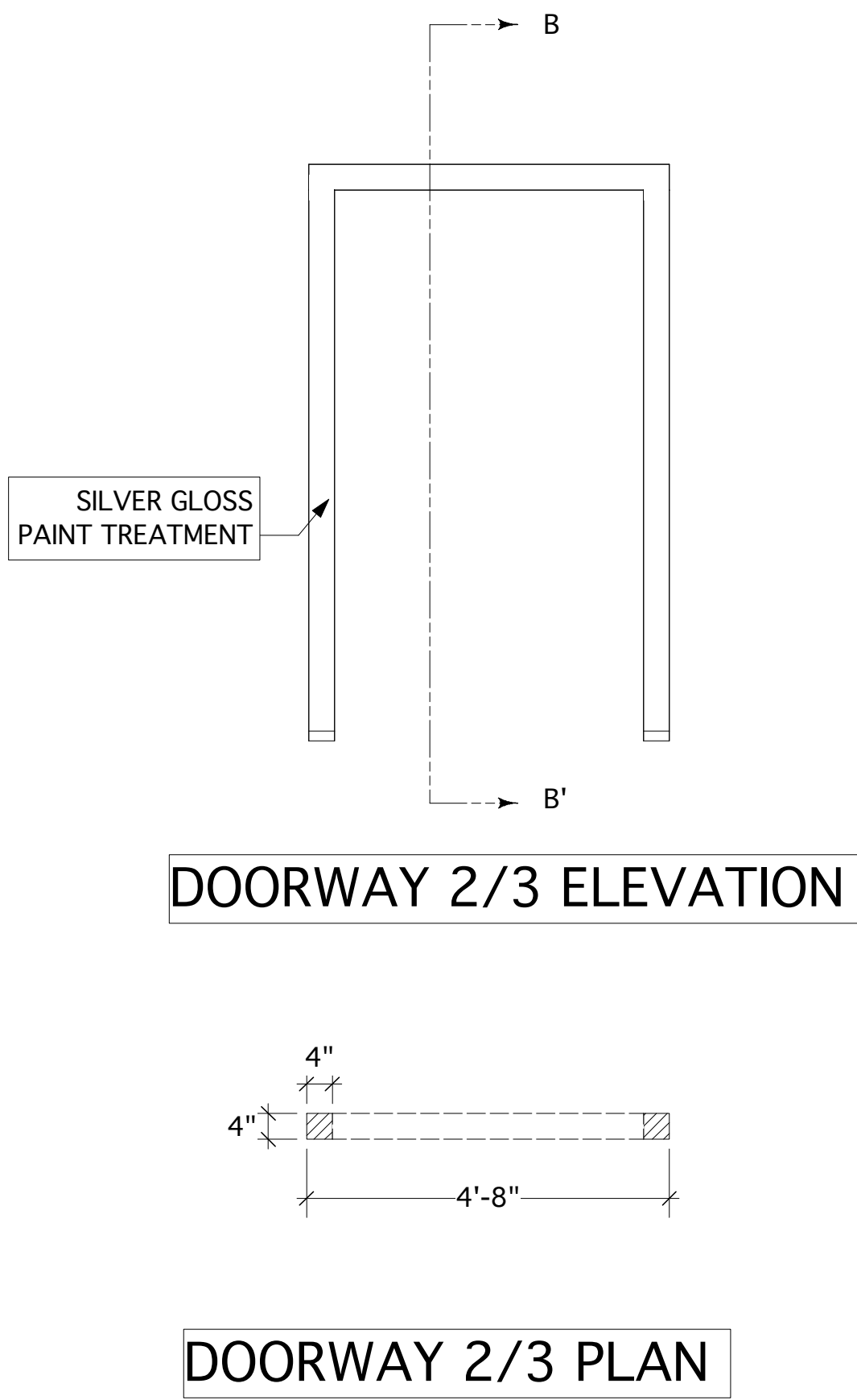
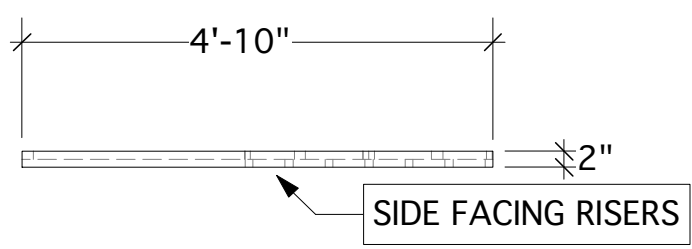
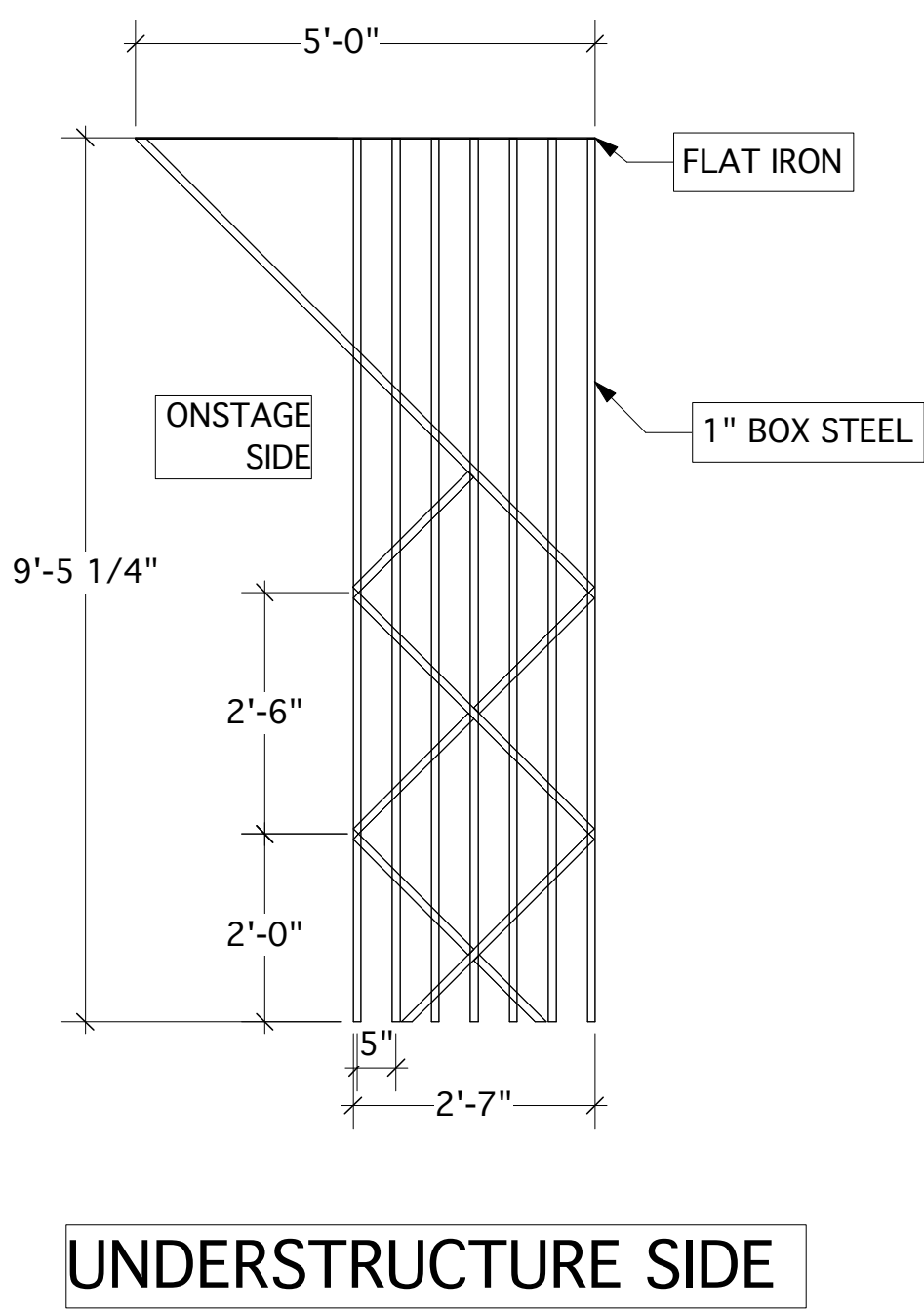
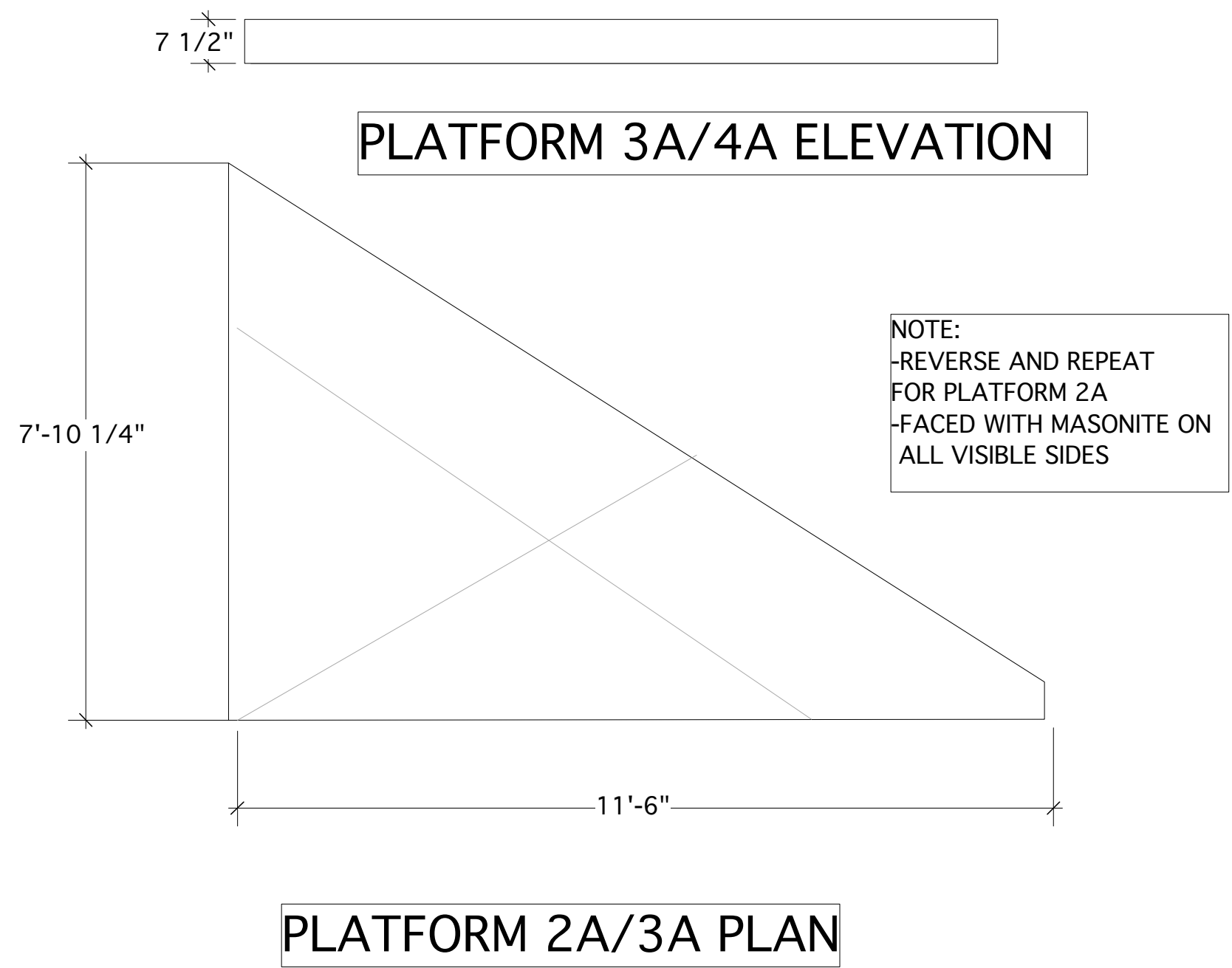
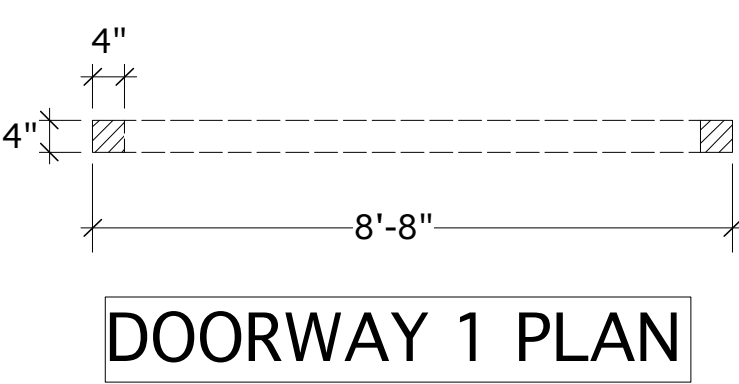
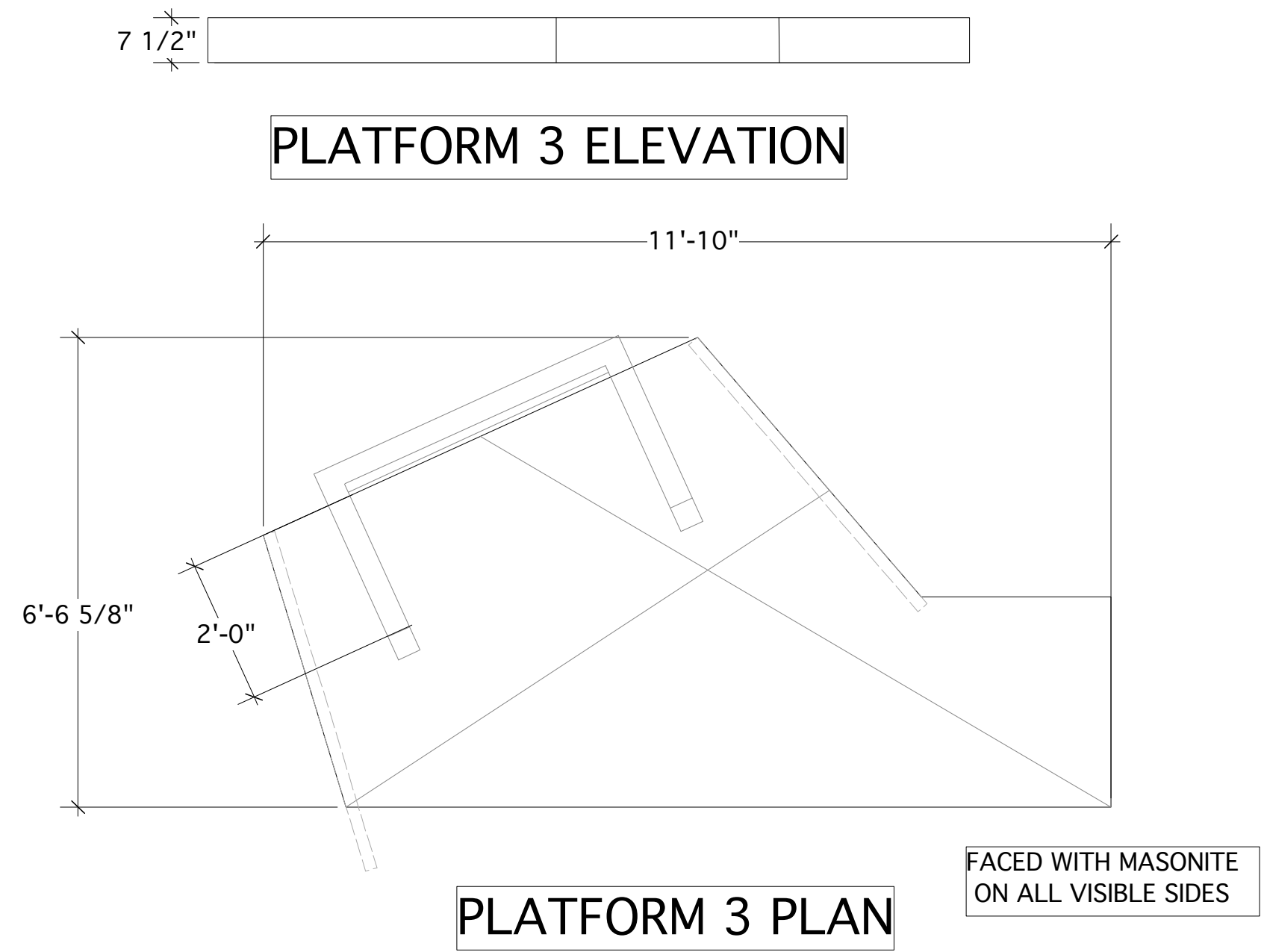
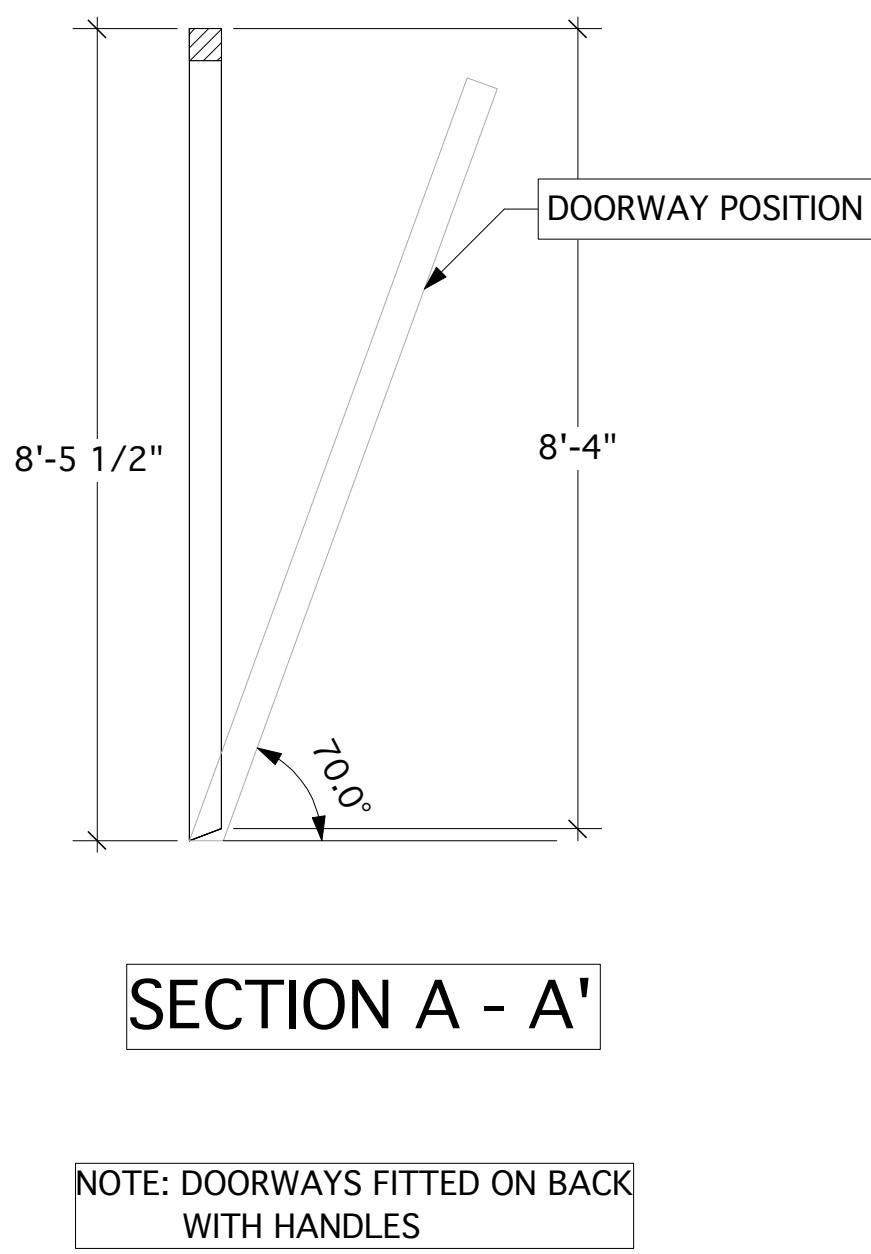
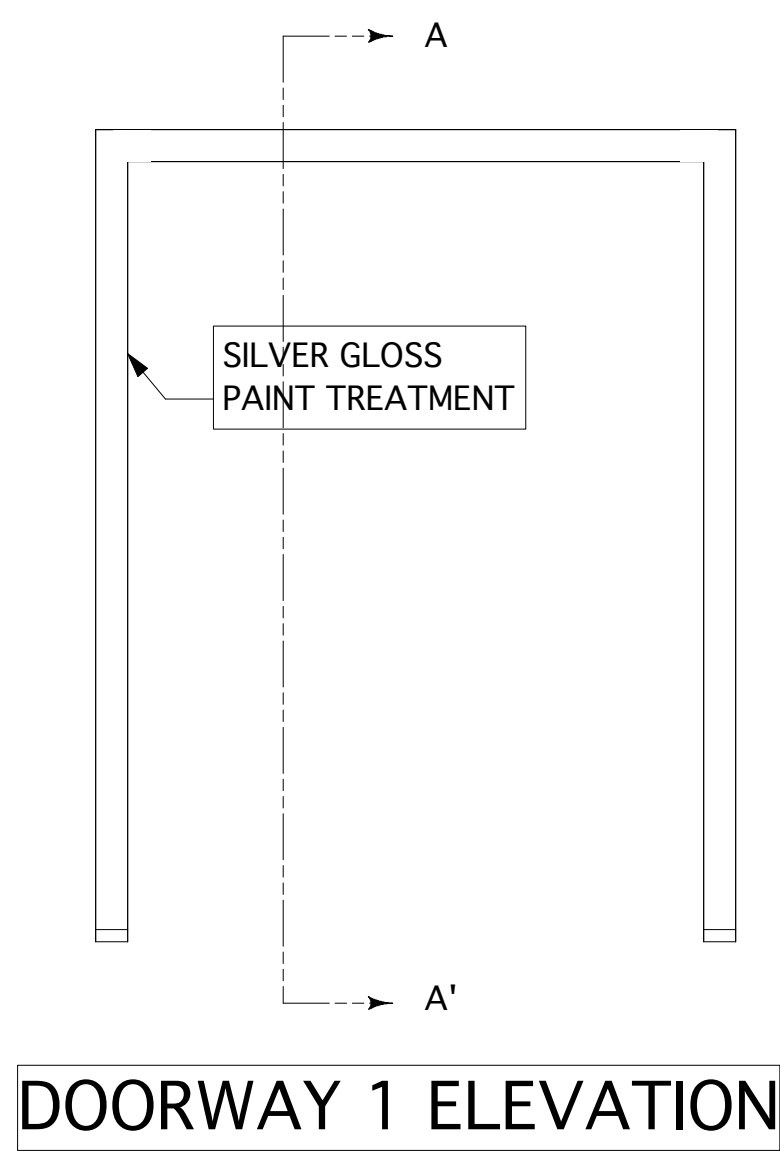
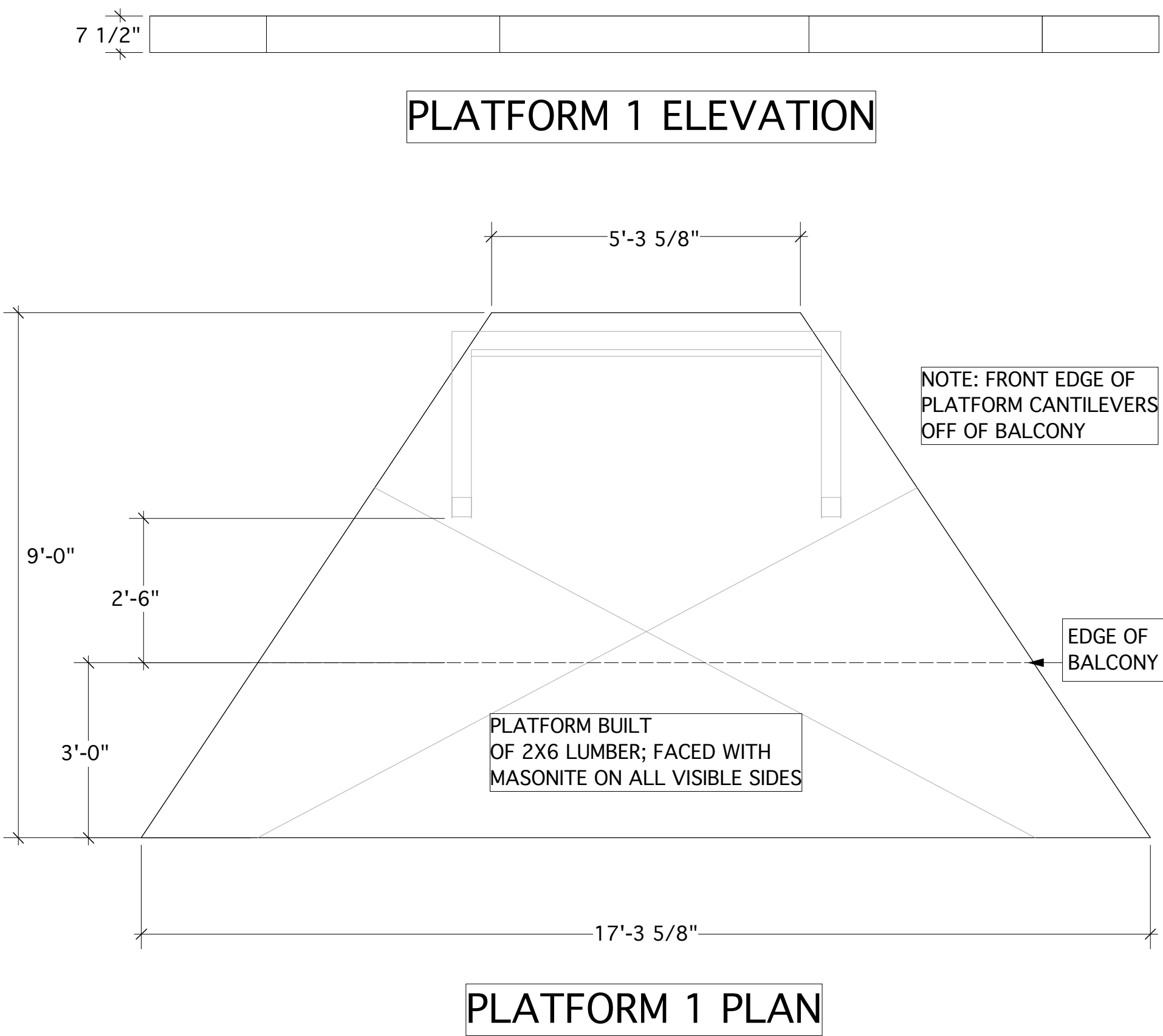
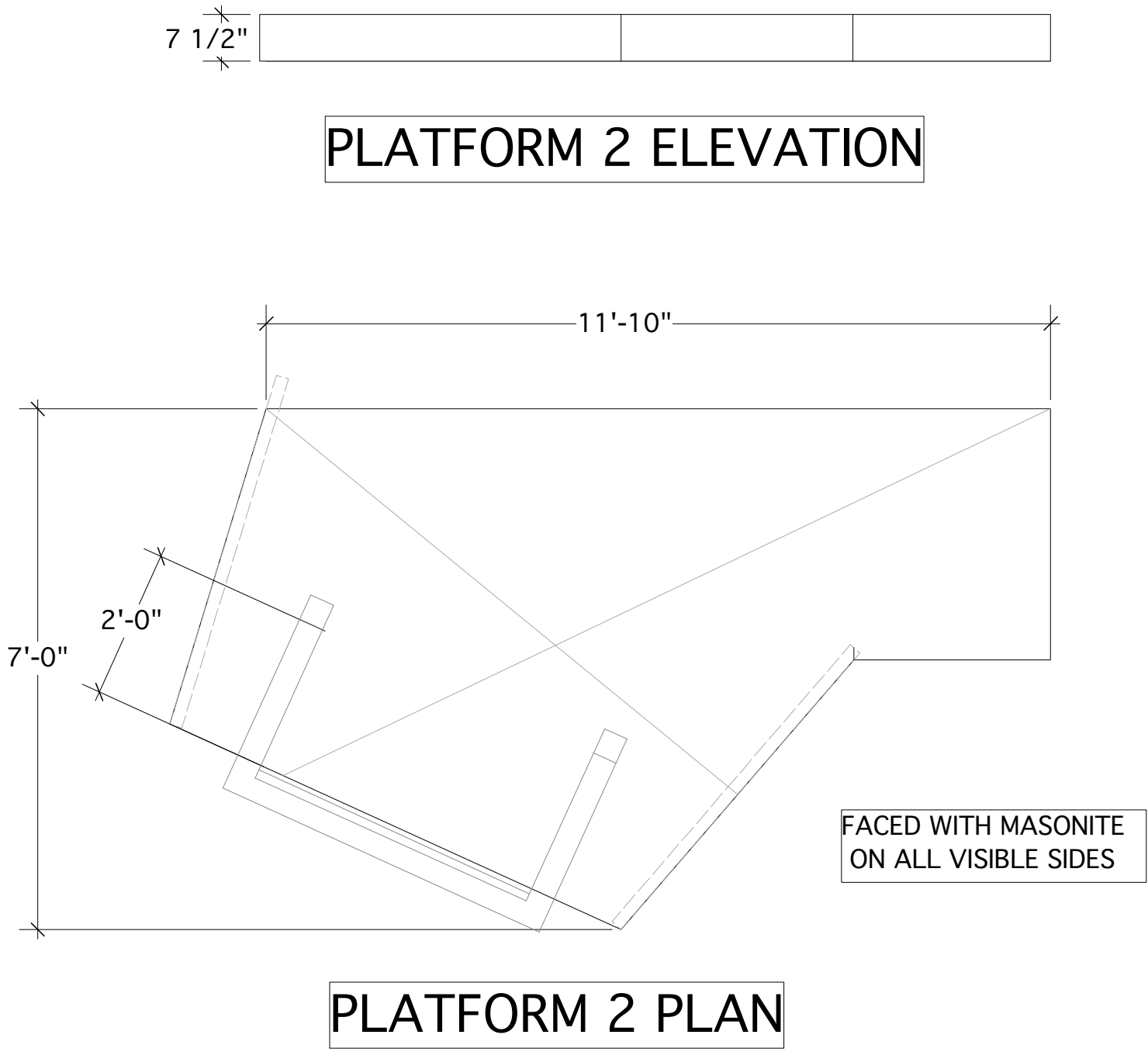




- ALL VISIBLE SIDES OF PLATFORM FACED WITH MASONITE
- CONNECTION BETWEEN RAMP AND EXIT PLATFORM LEAVES GAP FOR FIRE CURTAIN

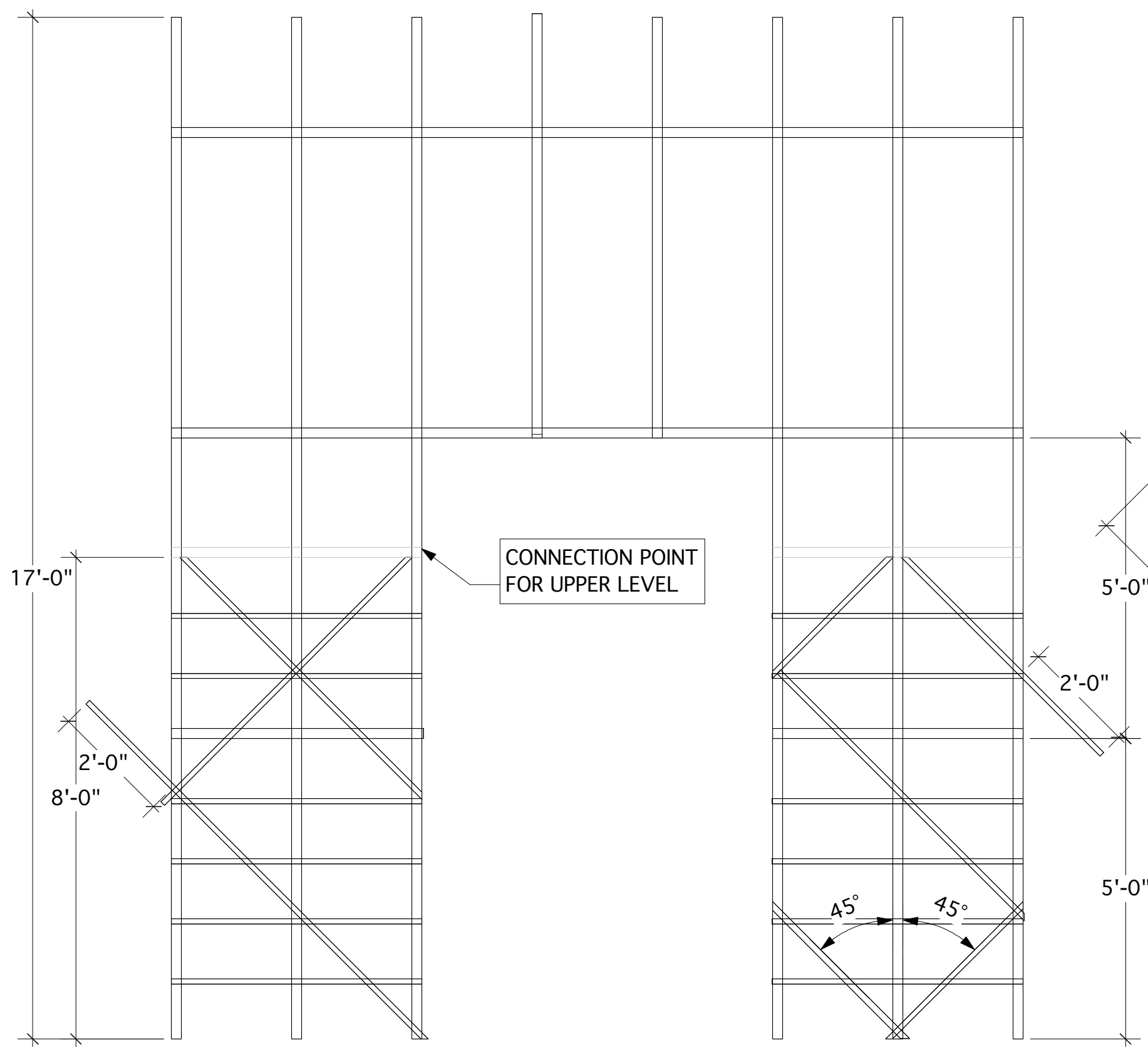




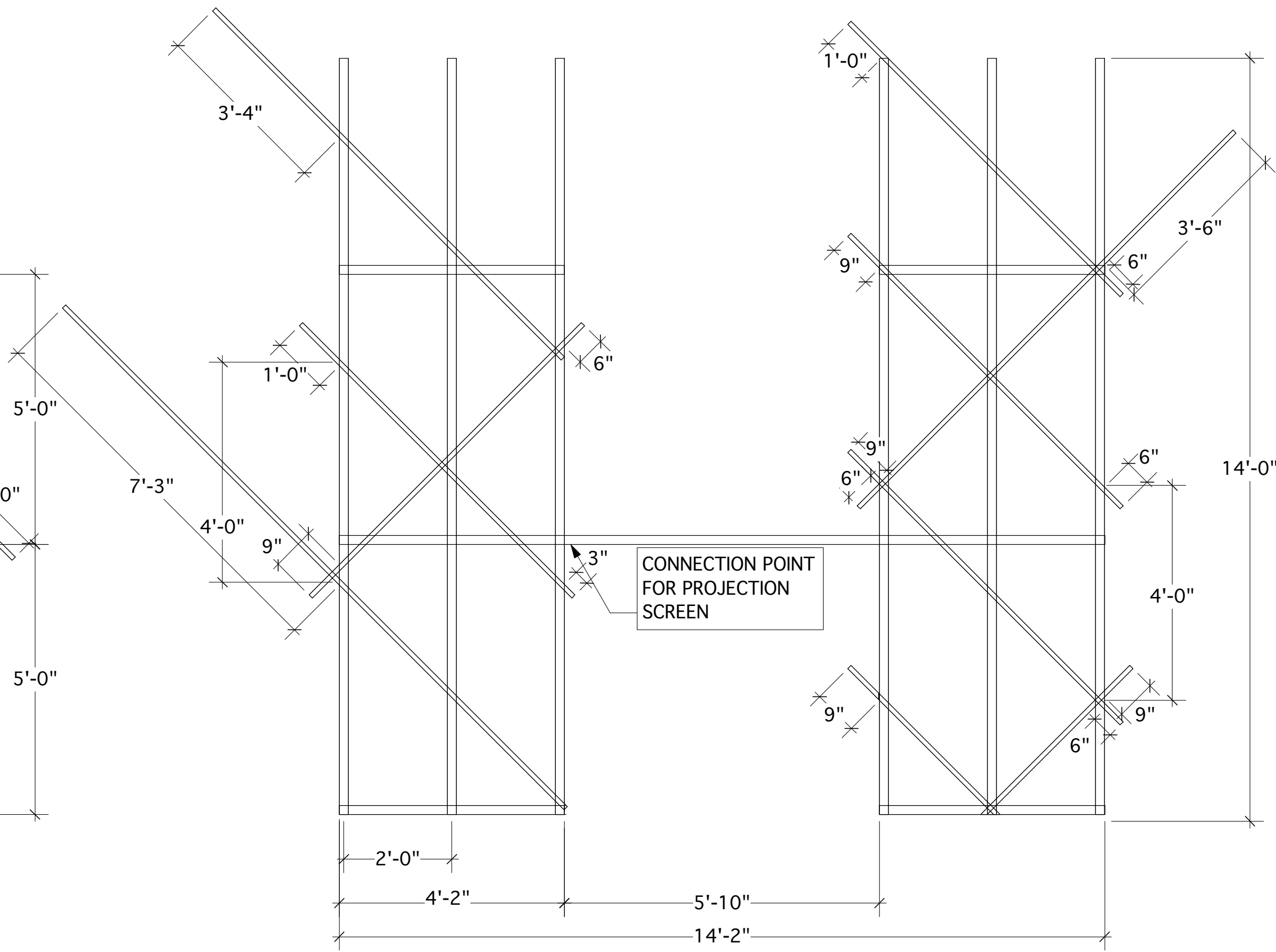
UPDATES:

-REVISIONS TO UNDERSTRUCTURE

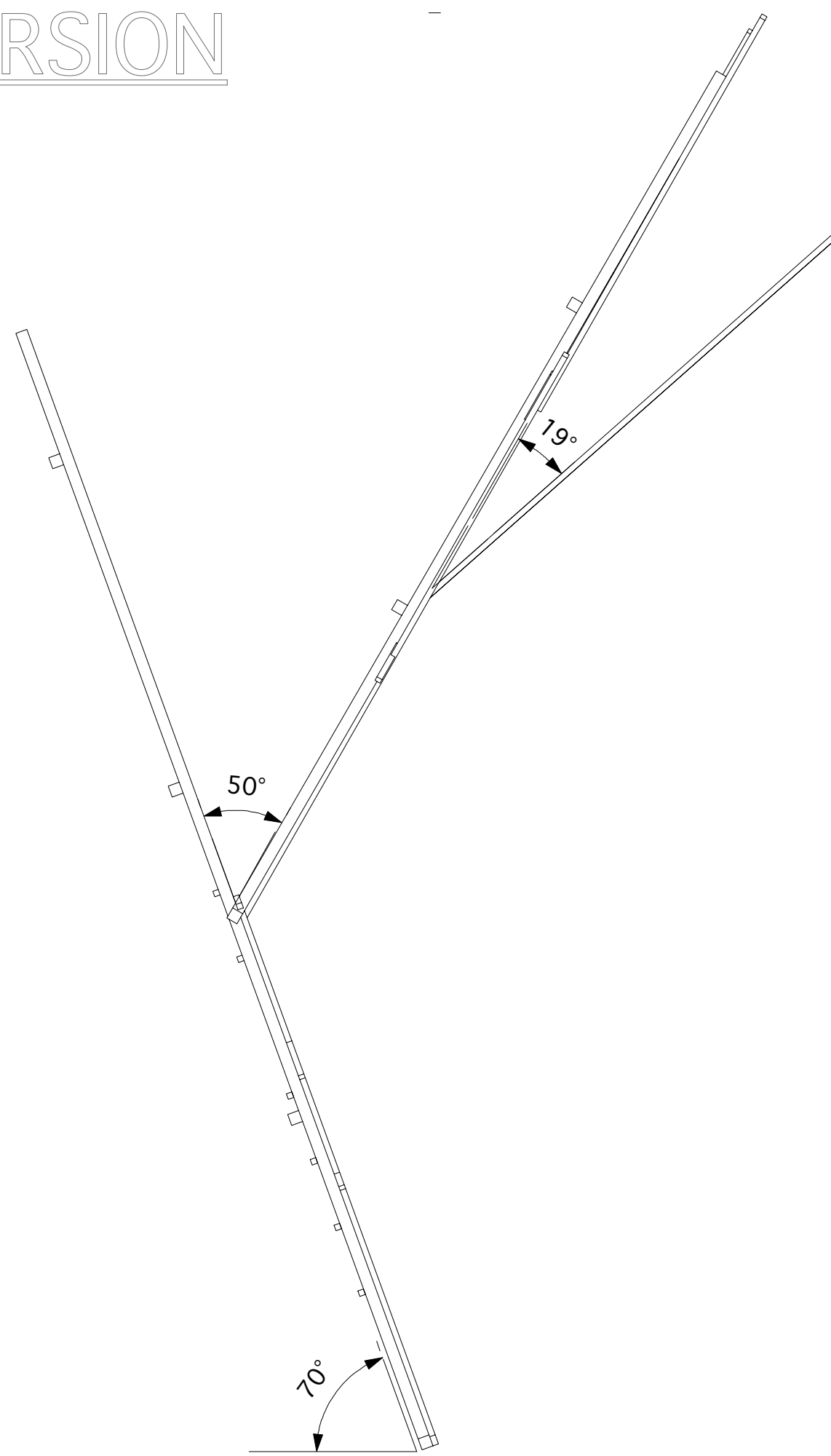
FAUST(US) ADAPTED FROM SCRIPT BY CHRISTOPHER MARLOW		PLATFORMS AND DOORWAYS	
Director: Jake Hooker Scenic Designer: Jason Maracani		Scale: 1/2" = 1' - 0"	Plate No.
1217 Wilbur St Pinckney, MI 48169		Date: November 18, 2015 Revision: December 11	4
Phone: (267) 566-5688 Email: jmaraca@oakland.edu		These drawings represent the artistic selection of the designer. The designer is not qualified in structural engineering or the production of these drawings. No responsibility for the construction or safety of any element is assumed by the designer. All fire & safety codes are to be strictly applied.	
		of 6	



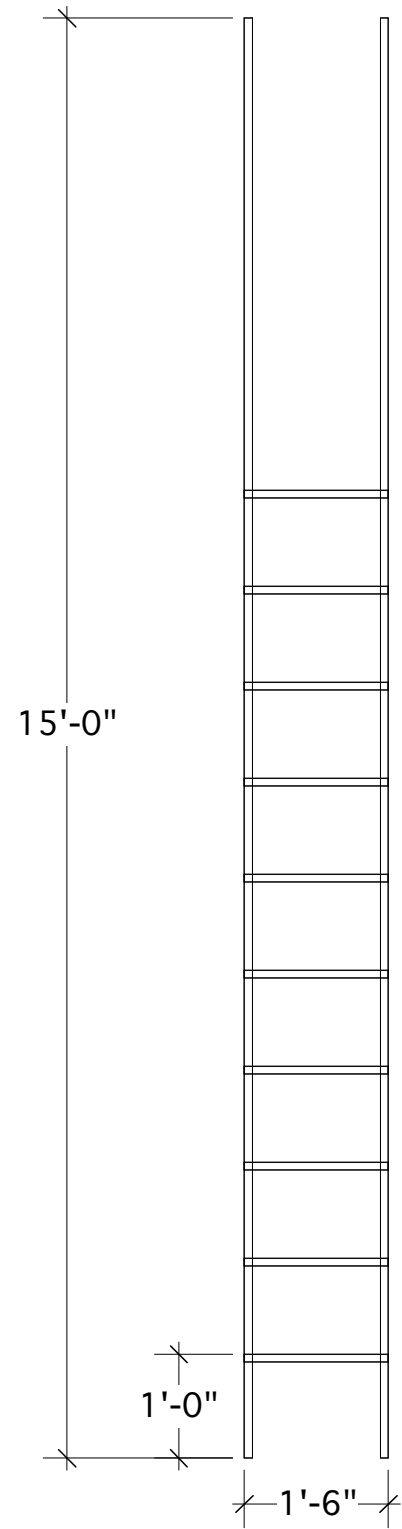
CENTER STEEL STRUCTURE
ELEVATION - LOWER LEVEL



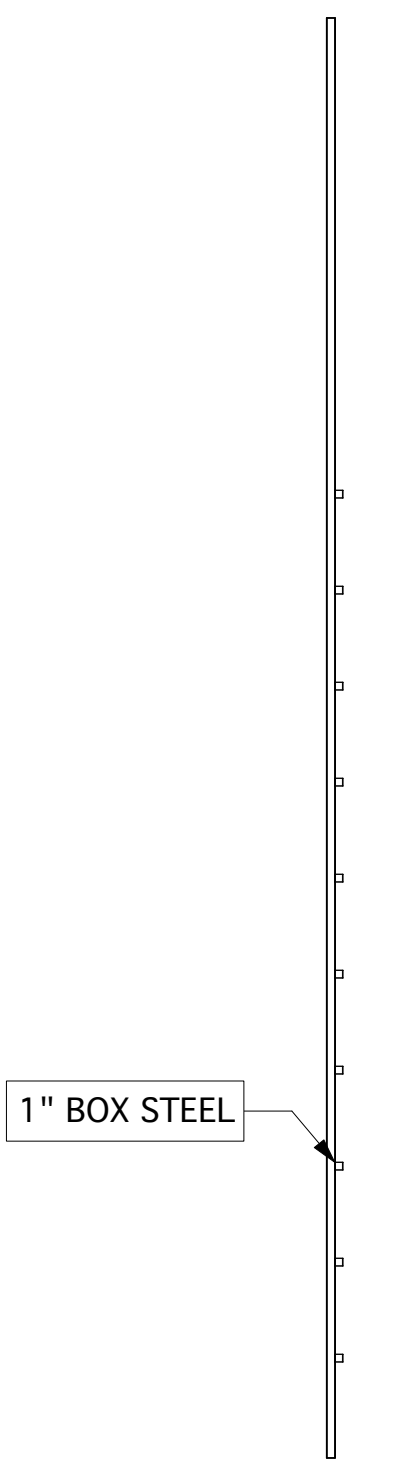
CENTER STEEL STRUCTURE
ELEVATION - UPPER LEVEL



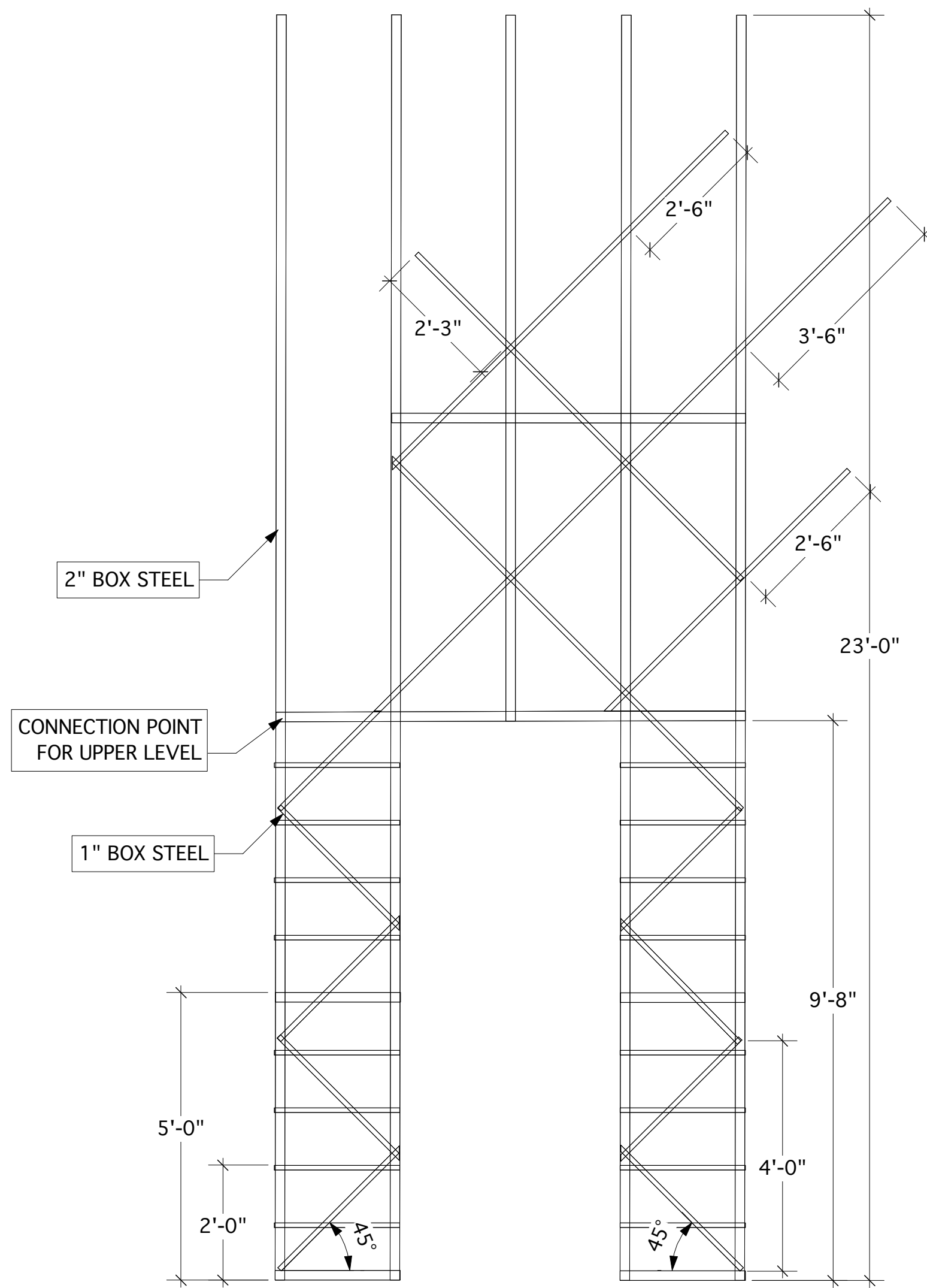
CENTER STEEL
STRUCTURE SIDE



LADDER
ELEVATION

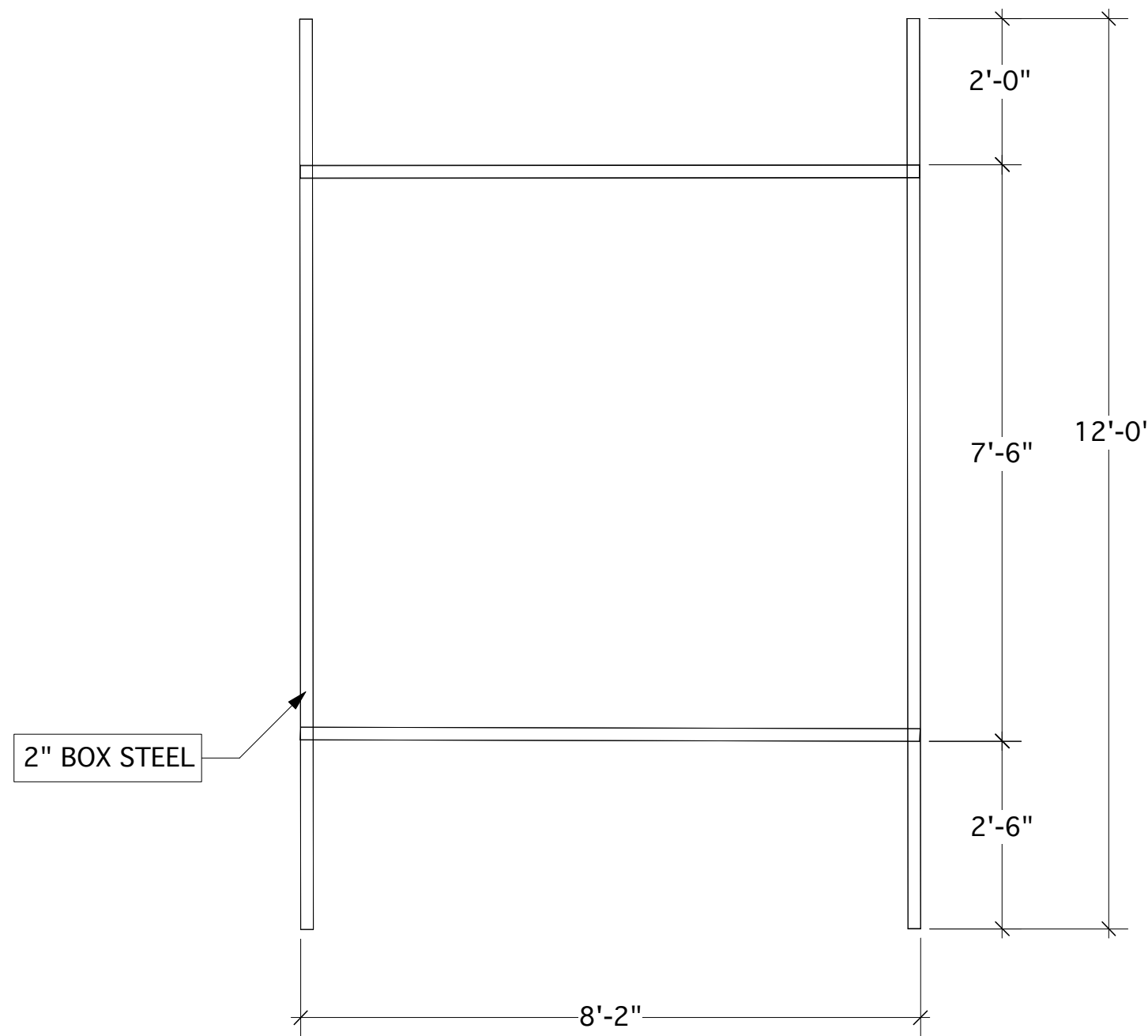


LADDER SIDE

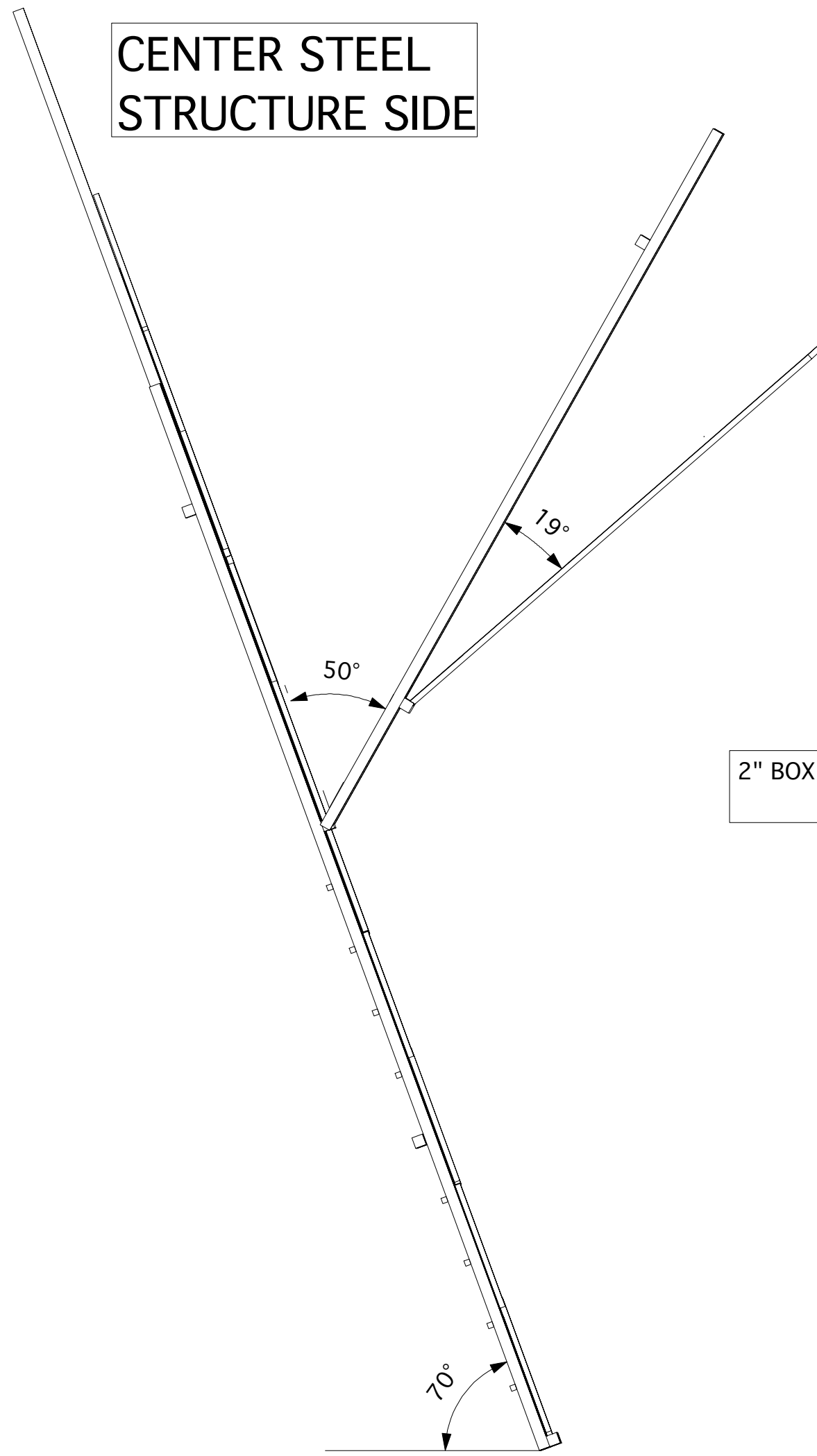


VOM STEEL STRUCTURE 1
ELEVATION - LOWER LEVEL

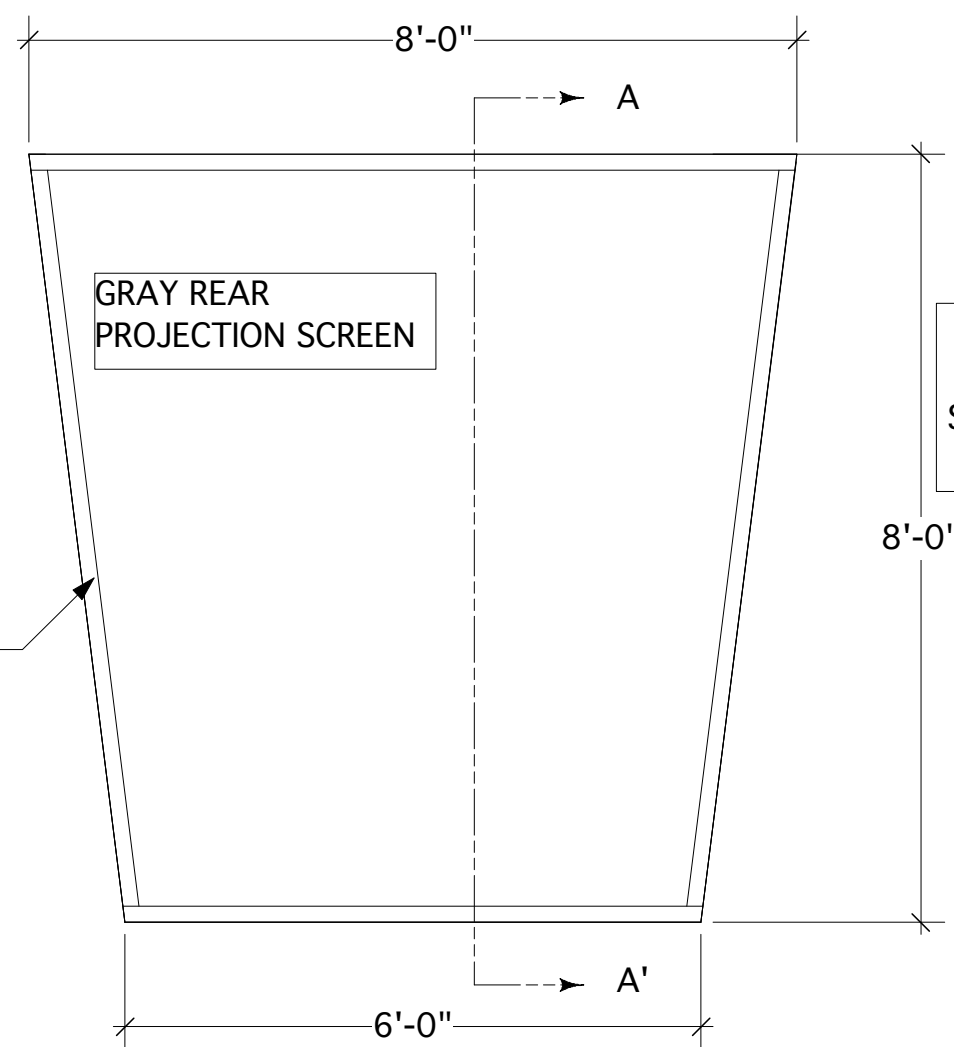
NOTE: REVERSE AND REPEAT FOR
VOM STRUCTURE 2



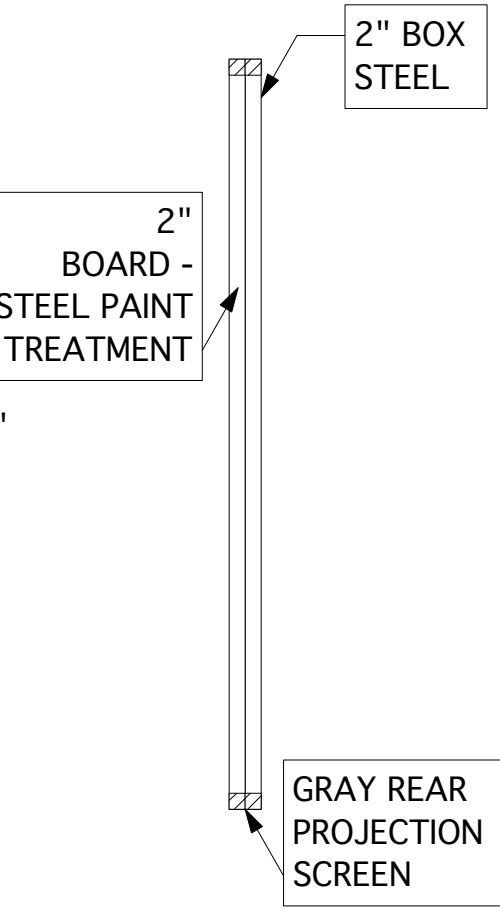
VOM STEEL STRUCTURE 1
ELEVATION - UPPER LEVEL



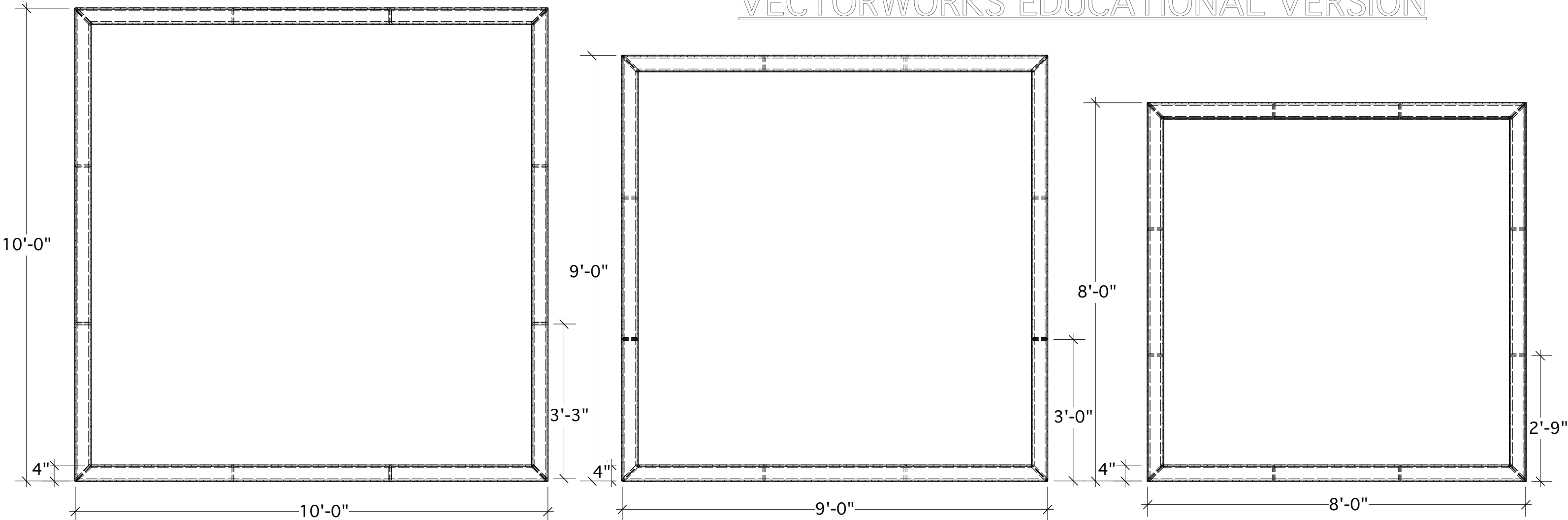
VOM STEEL
STRUCTURE SIDE



PROJECTION SCREEN
ELEVATION



PROJECTION SCREEN
SECTION



SQUARE 1 PLAN

SQUARE 2 PLAN

SQUARE 3 PLAN



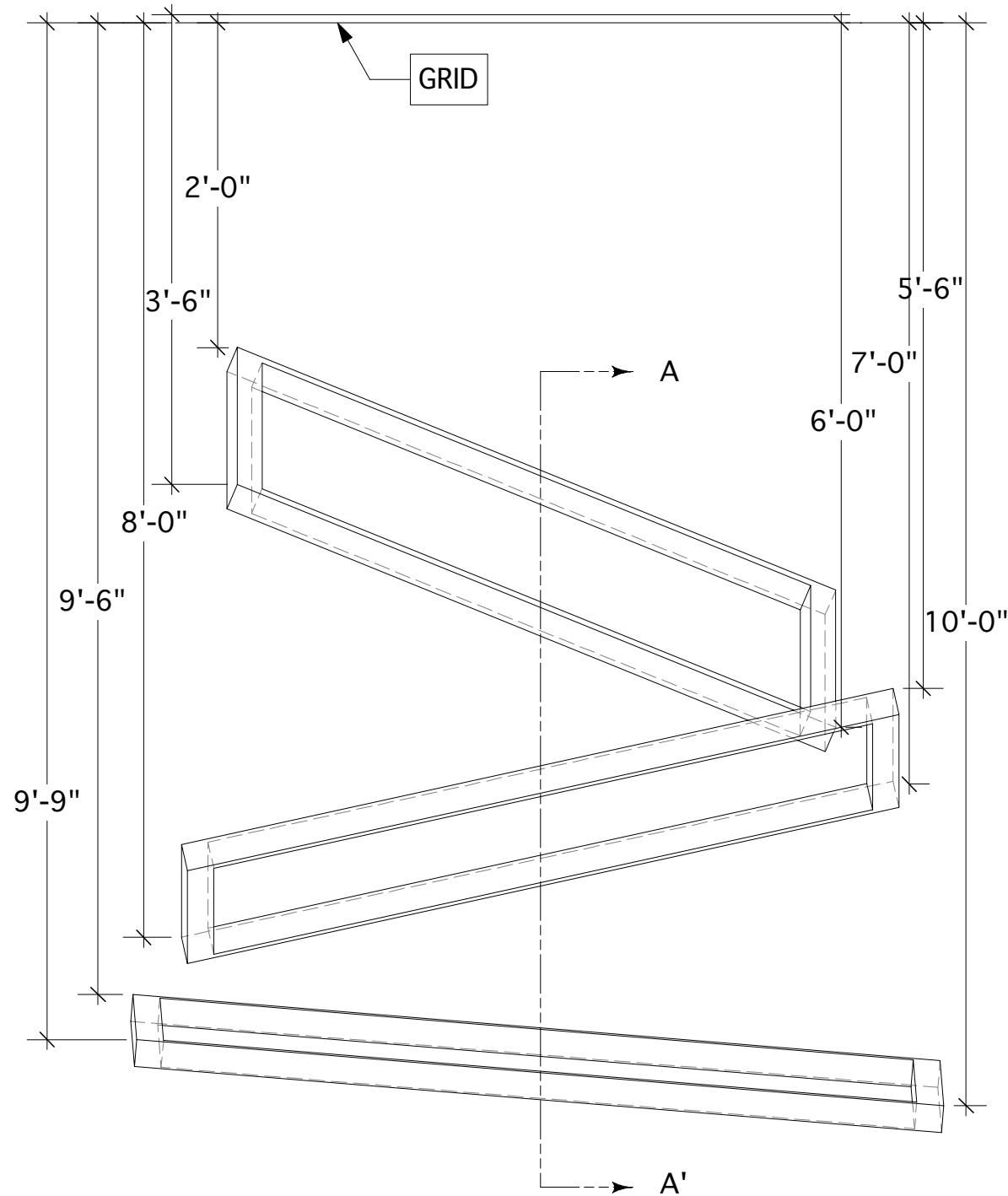
SQUARE 1 ELEVATION



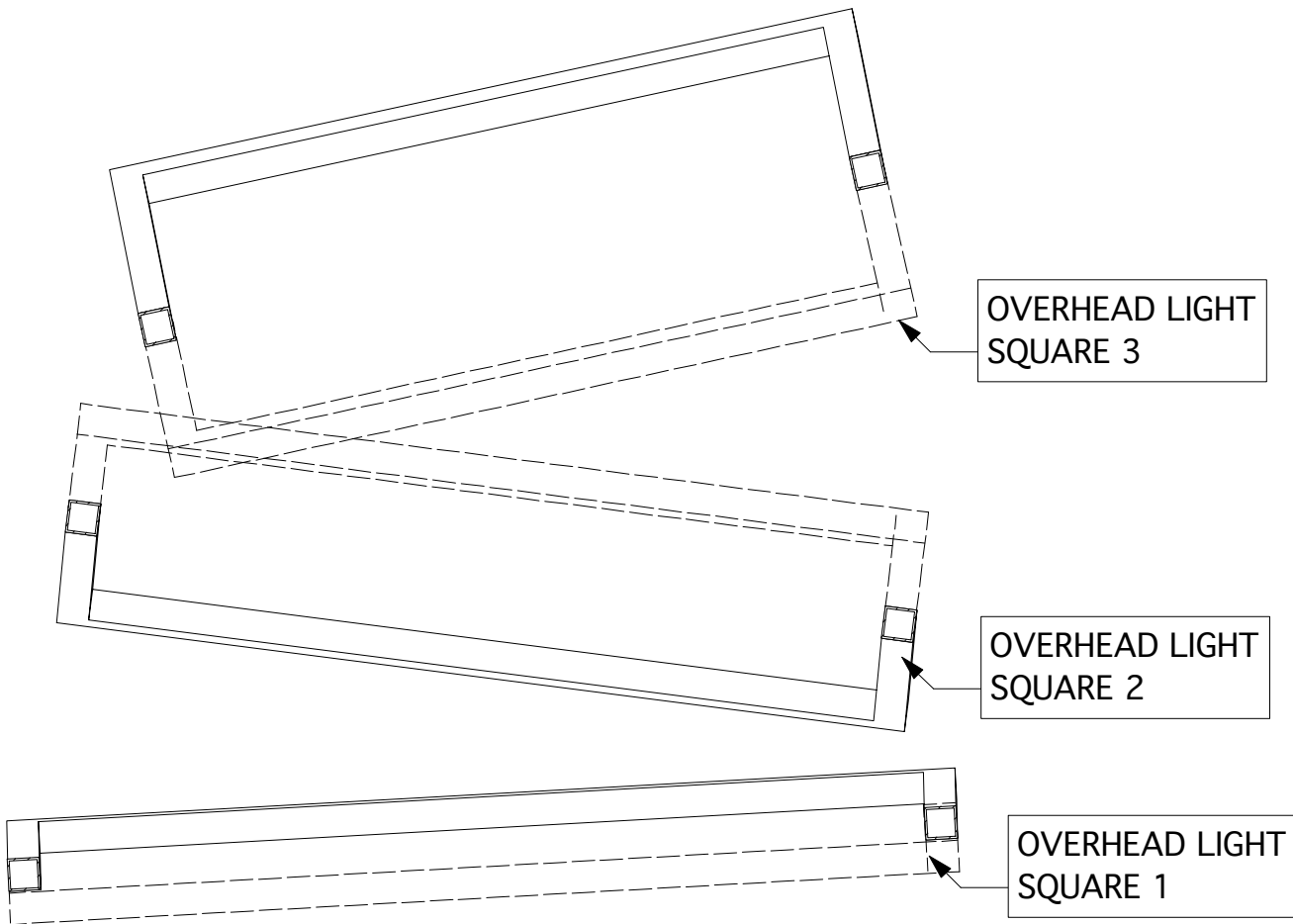
SQUARE 2 ELEVATION



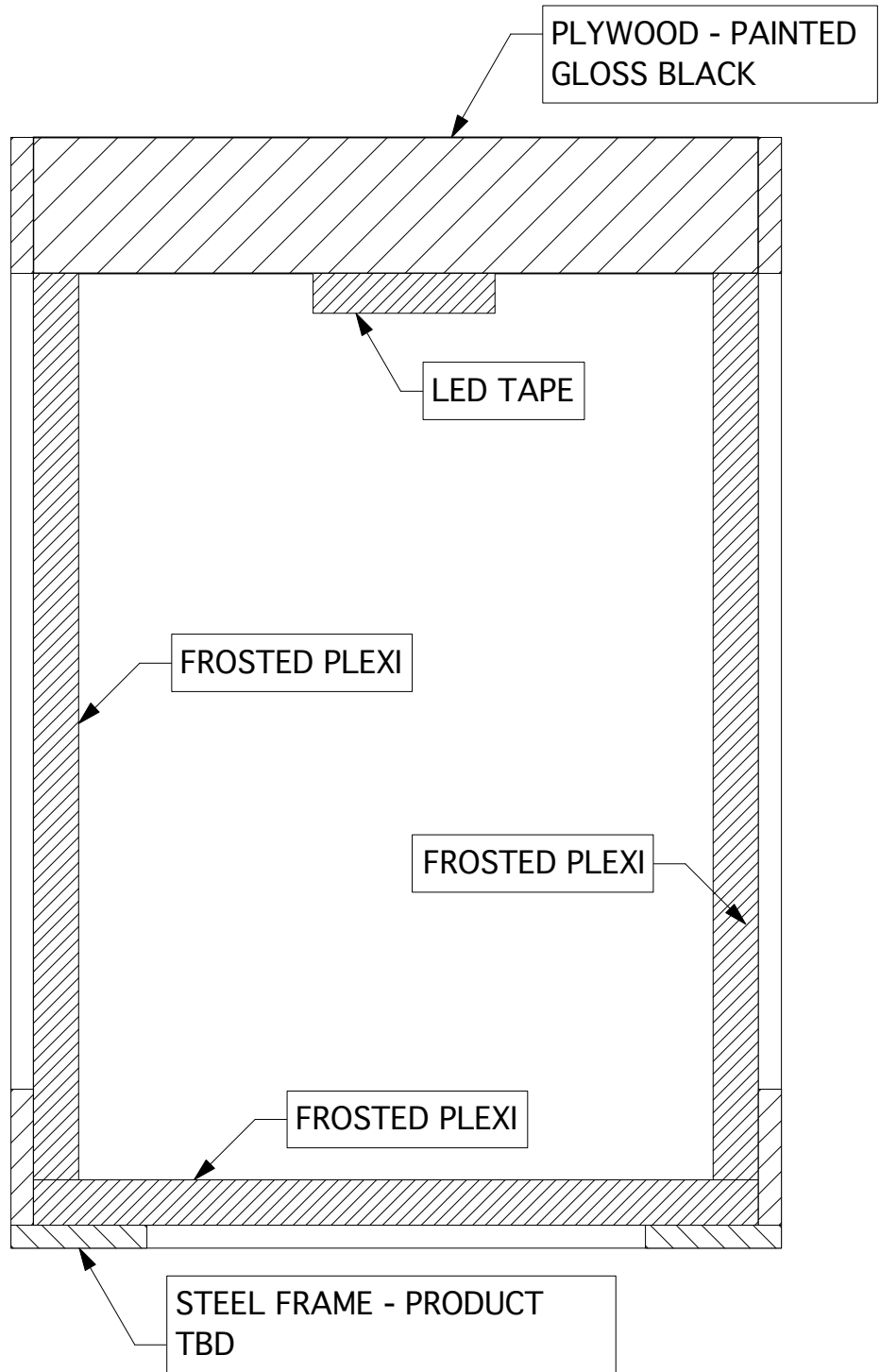
SQUARE 3 ELEVATION



OVERHEAD LIGHT SQUARES
ELEVATION



SECTION A-A'



FAUST(US) ADAPTED FROM SCRIPT BY CHRISTOPHER MARLOW		OVERHEAD UNITS	
Director: Jake Hooker Scenic Designer: Jason Maracani 1217 Wilbur St Pinckney, MI 48169 Phone: (267) 566-5688 Email: jpmaraca@oakland.edu		Scale: 1/2" = 1' - 0"	Plate No. 6 of 6
		Date: November 18, 2015	
		Revision: December 7	
These drawings represent the artistic intentions of the designer. The designer is not qualified as to, nor is responsible for the engineering or the production of these designs. No responsibility for the use, construction or safety of any element is assumed by the designer. All fire & safety codes are to be strictly applied			